



# Sherrill Faw Realty, LLC

307 10th Street, North Wilkesboro, NC 28659

*A Christian Office* Office: 336-903-0060



**HUD Broker**

**Sherrill Faw**  
Broker-in-charge  
336-957-7600



**Joe McMillan**  
Broker  
336-984-5549



**Marty Johnson**  
Provisional Broker  
336-469-4392



**Yvonne Pardue**  
Broker  
336-262-6410



**Bonnie Alday**  
Office Manager



**Darla Terrell**  
Marketing Manager

**MLS 1131980 \$179,900**



**2124 Congo Road Wilkesboro**  
Like new double-wide home with a great floor plan on a semi-private .57 ac lot.  
**LIKE NEW!**

**MLS 936404 \$15,000**



**Lot 9 Clingman Meadows**  
0.60 acre good level lot for your new home. Only 15 minutes to North Wilkesboro or Elkin.

**APPROVED FOR DOUBLE-WIDE MOBILE HOMES**



**2 Lots on Smith Ridgecrest Rd**  
Great location for double wide mobile homes or starter home (no single wides). Public water available. Close to Roaring River and Yadkin River for great fishing. Only 5 miles from N Wilkesboro & 9 miles to Elkin.

**Lot 5 - 0.40 acre \$11,900**  
**Lot 12 - 0.65 acre \$9,999**

**MLS 1026904 \$95,000**



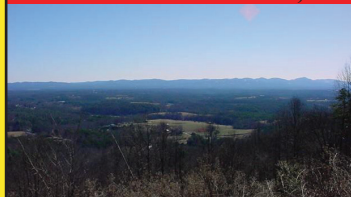
**Off Jolly St, N Wilkesboro**  
12.57 acres in a great location to build your manufacturing or any business that creates industrial products.

**MLS 1115444 \$42,450**



**Ashe View Drive, Millers Creek**  
Build your mountain home on this mostly flat 1.31 acre lot in the Bull Mountain community.  
**GREAT LOT**

**MLS 1071205 \$49,900**



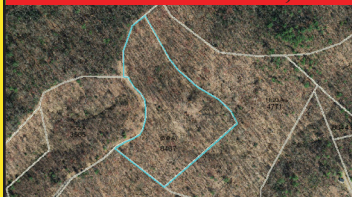
**TBD Highland North Rd**  
6.59 acres of land to build your dream home. Only 12 miles to the Blue Ridge Parkway.  
**REDUCED**

**MLS 1091925 \$29,900**



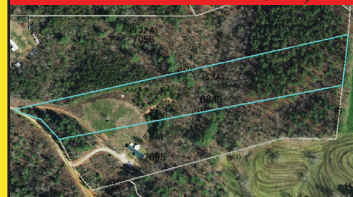
**Lots 230 & 231 Lakeside Drive**  
15.47 acres in the equestrian community of Chestnut Mountain Farms.  
**GREAT PRICE!**

**MLS 1093124 \$32,000**



**Hawkins Grove Rd**  
6.90 unrestricted acres in a private location minutes away from the Thurmond Chatham Game Lands & N. Wilkesboro. **REDUCED**

**MLS 1131600 \$28,900**



**River Bend Lane, Hays**  
5.067+/- acres close to Stone Mountain and mobile homes are allowed.  
**REDUCED**

**MLS 1131616 \$21,600**



**River Bend Lane, Hays**  
Mobile homes are allowed on this 5 +/- acres close to Stone Mountain.  
**REDUCED**

**LET US  
SELL  
YOUR  
HOME!**





# Sherrill Faw Realty, LLC

307 10th Street, North Wilkesboro, NC 28659

*A Christian Office* Office: 336-903-0060



**MLS #1125278 \$1,100,000**



**305 10th St, N Wilkesboro**  
40,000 sqft 4 storey building that is 75% occupied with tenants. The top floor could be repurposed for apartments. **COMMERCIAL LISTING**

**MLS 1128962 \$399,000**



**1400 D Street N Wilkesboro**  
For sale or lease at the busy corner of D Street and Boone Trail. It has 2 new gas pumps and 3 tanks. **COMMERCIAL LISTING**

**COMMERCIAL LEASE**



**305 10th Street N Wilkesboro**  
3rd floor space with 5000 square ft, heat & air, restroom, public & private parking. **Available now \$1,000 per month**

**COMMERCIAL LEASE**



**1617 Industrial Dr**  
7600 sqft building with showroom, office space, storage & utility rooms, warehouse space, 2 loading docks & 1 tall garage door. **\$3,000 per month**

*Myers Estate is Now Open*

**to tiny homes**

from 600 square feet & some restrictions apply



## AVAILABLE LOTS:

- Lot 1 - 3.80 acres \$36,500
- Lot 2 - 4.43 acres \$42,500
- Lot 3 - 11.41 acres \$79,500
- Lot 4 - 10.261 acres \$75,900
- Lot 5 - 5.67 acres \$49,500
- Lot 6 - 3.72 acres \$39,900
- Lot 7 - 3.13 acres \$30,900
- Lot 8 - 3.36 acres \$34,500

**MLS 1055259 \$24,900**



## 16 Doe Mtn

1.80 acres in gated community minutes from the Blue Ridge Parkway with great views. **OWNER FINANCING AVAILABLE**

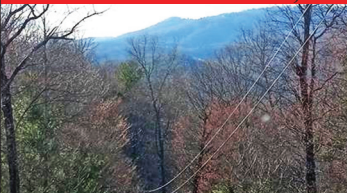
**MLS 1015051 \$19,900**



## LOT 43 Bull Mtn

1.21 acres in a gated community with long range views. **OWNER FINANCING AVAILABLE**

**MLS 1099322 \$109,900**



**Mountain Vista Dr, McGrady**  
21.09 acres of beautiful mountain land, some restrictions apply. **MOUNTAIN VIEWS**

**MLS 1099340 \$18,900**



**Mountain Vista Dr, McGrady**  
1.93 acres with beautiful long range mountain views. The perfect lot for your mountain home. **MOUNTAIN VIEWS**

**MLS 960168 \$21,900**



## Lot 110 Rock Wall Road

3.01 acres in Sutter's Ridge a beautiful residential restricted neighborhood with a private setting. **OWNER FINANCING AVAILABLE**

**MLS 1093231 \$29,900**



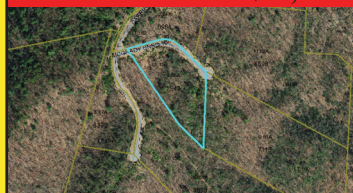
**Lot 154 Carriage House Trail**  
6.50 acres in Chestnut Mountain Farms equestrian community with riding trails, barn & paved roads. **OWNER FINANCING AVAILABLE**

**MLS 1098603 \$18,905**



**1.25 ac Holly Brook Street**  
Nice partially wooded lot with end of the road privacy in Holly Hills subdivision.

**MLS 1086861 \$29,900**



**Lot 159 Carriage House Trail**  
3.86 acres located in Chestnut Mountain Farms an equestrian community with riding trails, barn, paved roads.

**MLS 1126899 \$29,900**



**Ashe View Drive lot 23 Bull Mtn.**  
Build your mountain dream home on this 1.19 acre lot. Bull Mountain is a gated community with paved roads and long range views.

**REDUCED!**  
**MOUNTAIN VIEW ESTATES**

**Lot A .50 ac \$8,600**

**Lot 1 .72 ac \$9,000**

**Lot 13 .35 ac \$6,700**

Go to our website [www.sherrillfaw.com](http://www.sherrillfaw.com) and click on "menu" to see listings.